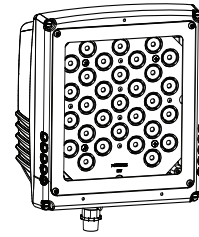


NITE BRITES

FSS-LED SMALL FLOODLIGHT 40 and 60 Watt LED

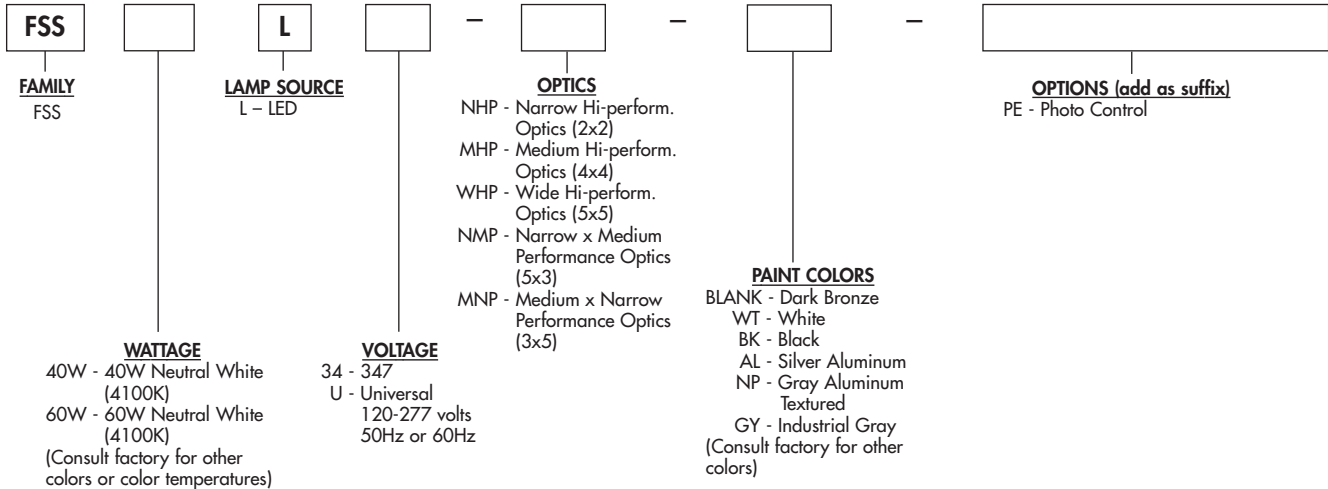


JOB NAME _____
TYPE _____

The LED Small Floodlight has the right size and wattage range for lighting smaller areas. Use the Small Floodlight for building facades, security, signs and displays.

ORDERING MATRIX

SAMPLE CATALOG NUMBER: FSS60WLU-NHP



ACCESSORIES (order separately)

- CAM - Crossarm Adapter
 - PTF - Post Top Slipfitter
 - VFSFLED - Vandal Shield
 - PBM - Pipe Bracket
 - PEC-48 - Photo Control 480 volt
 - PEC-MT - Photo Control multi-volt
 - WGFSSLED - Wire Guard
 - WTM - Wiring Trough
 - WLS-PEC12 - Photo Control 120 volt
 - WLS-PEC27 - Photo Control 208-277 volt
 - TP - Tamper Proof
- (For additional descriptions of Floodlight accessories refer to sheet number OA-50010.)

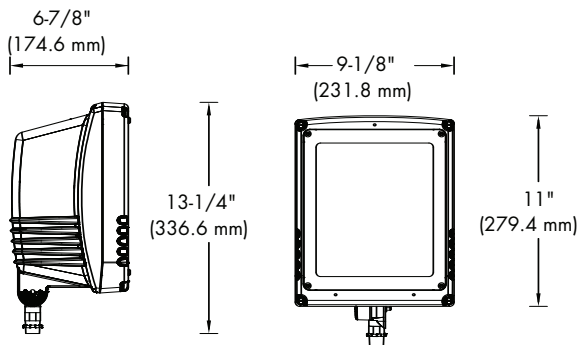
General Notes:

All options are factory installed.
All accessories are field installed.
Data subject to change without notice.

Predicted L70 Lifetime:

25°C Ambient - >60,000 hours
40°C Ambient - >60,000 hours
(based upon LED manufacturer's supplied LM-80
data and in-situ laboratory testing)

DIMENSIONS



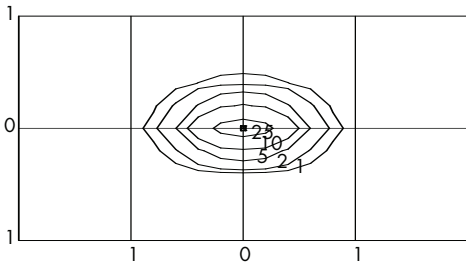
EPA = .55 sq. ft.
WEIGHT = 17 lbs. (max.)

FSS-LED SMALL FLOODLIGHT

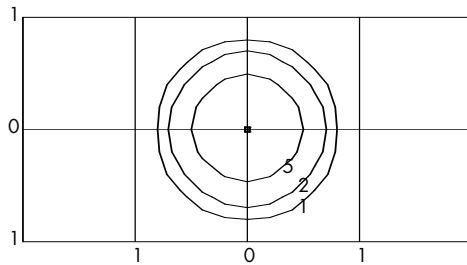
FL-41041.3

PHILIPS
Day-Brite

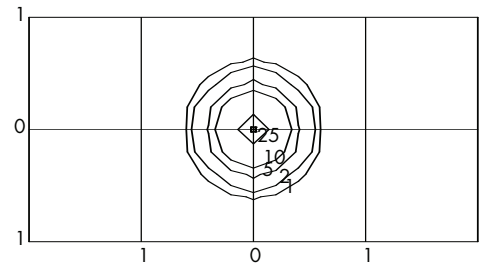
PHOTOMETRICS



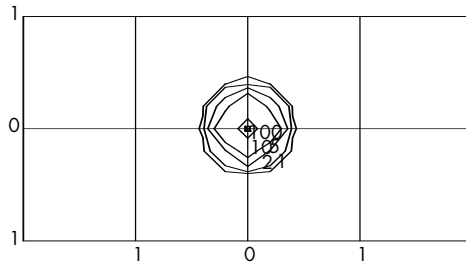
CATALOG NUMBER: FSS40WL-NMP
 TEST NUMBER: LTL19060
 LAMP: LED
 WATTAGE: 42
 LUMENS: 2239
 TILT ANGLE: 0°
 MOUNTING HEIGHT: 15 FEET



CATALOG NUMBER: FSS40WL-WHP
 TEST NUMBER: LTL19059
 LAMP: LED
 WATTAGE: 42
 LUMENS: 2227
 TILT ANGLE: 0°
 MOUNTING HEIGHT: 15 FEET



CATALOG NUMBER: FSS40WL-MHP
 TEST NUMBER: LTL19057
 LAMP: LED
 WATTAGE: 42
 LUMENS: 2315
 TILT ANGLE: 0°
 MOUNTING HEIGHT: 15 FEET



CATALOG NUMBER: FSS40WL-NHP
 TEST NUMBER: LTL19058
 LAMP: LED
 WATTAGE: 42
 LUMENS: 2407
 TILT ANGLE: 0°
 MOUNTING HEIGHT: 15 FEET

Note:
 Photometric values based on tests performed in compliance with LM-79

PRODUCT FEATURES

Certified to meet UL 1598 standards for wet location and 40°C ambient.

1. Sturdy one piece die cast aluminum housing.
2. Cast aluminum heat sink designed for excellent thermal transfer to extend component life.
3. Tempered glass lens is thermal shock and impact resistant.
4. Polyester powder finish for excellent impact, corrosion and UV resistance.
5. 1/2" NPT die cast aluminum arm mount.
6. Furnished with 10kV surge protector.
7. Components are RoHS compliant.
8. LED light engine and driver are field replaceable.

5 Year Limited Warranty

